

Take-Out Holders and Inserts

Full line of holders and GLASSMATE® graphite inserts



TABLE OF CONTENTS

Inserts	3	Size 18 mm and 22 mm with Fixed or Floating Inserts (ILS)	5
Blanks	3	Size 2" x 1/4" with Fixed Inserts	6
Finished Inserts	3	Size 2" x 1/4" with Fixed or Floating Inserts	7
Typical Finishes	3	Size 2 1/8" x 1/4" with Fixed or Floating Inserts	8
GLASSMATE® Insert Graphite Grades	3	Size 2 1/8" x 1/4" with Fixed or Floating Inserts (ILS)	9
GM	3	Size 2 1/2" x 1/4" with Fixed or Floating Inserts	10
LT	3	Size 3" x 1/4" with Fixed or Floating Inserts	12
SR	3	Size 3" x 3/8" with Fixed Inserts	13
XL	3	Size 3 5/8" x 1/4" with Fixed or Floating Inserts	14
Take-Out Holders	3	Size 4 3/8" x 1/4" with Fixed or Floating Inserts	15
Features	3	Repair Kits and Parts	16
Holder Styles	4	Standard, double stacked, extended, modified, lightweight holders	16
Standard	4	Dual function holders (PR-2)	16
Covered	4	Side mount holders	16
Interior Spring (ILS-1)	4	Interior Spring (ILS-1)	16
Double Stacked	4	For More Information	17
Extended	4	Terms and Conditions of Sale	17
Modified	4		
Side Mount	4		
Lightweight	4		
Dual Function (PR-2)	4		

INSERTS

Blanks

Our hot glass handling materials have high strength, durability, and excellent thermal properties that reduce mechanical damage.

Blanks are ready to be machined with desired finish.

Finished Inserts

Our experienced designers can assist with insert drawings to be precision machined into insert pairs. Customers should supply a bottle drawing or neck ring drawing for custom inserts.

Our quality system is certified to ISO 9001:2008 and AS9100:2009.

Typical Finishes

Crown



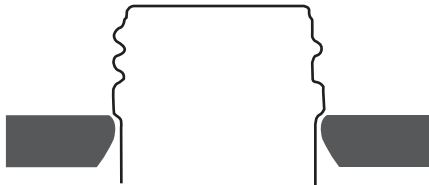
Thread



Underthread



Bead



GLASSMATE® INSERT GRAPHITE GRADES

Our GLASSMATE family of graphite materials have been specifically developed for use in hot glass contact applications. Take-out inserts made from GLASSMATE materials have the heat resistance, strength, durability, and non-absorption characteristics to perform under the most rigorous conditions without damaging the glassware. Our hot glass handling materials offer excellent performance combined with reduced mechanical damage for increased pack rates.

GM

GLASSMATE-GM Graphite – This material has high strength and durability for applications with high wear. An exceptional insert material for precision thread pickup and long production runs.

LT

GLASSMATE-LT Graphite – This material has high strength for applications that incur high wear. It has a low thermal conductivity, which enables it to be used for handling sensitive glass.

SR

GLASSMATE-SR Graphite – An economical material for short production runs. An ideal insert material for thick bead transfer applications.

XL

GLASSMATE-XL Graphite – An exceptionally strong and wear-resistant, 1 micron grade. Ideal material for highly detailed thread finishes and long-run, high-wear conditions.

TAKE-OUT HOLDERS

Our uniquely designed take-out holders makes it easy to change or snap a new insert into them without machine realignment. These durable holders give long service life and will take all popular finishes up to 87 mm.

Features

- Exact fit with accompanying GLASSMATE graphite take-out inserts
- Anti-rotational interlock design with inserts assures positive finish alignment
- Spring tension clip holds inserts firmly in place

- Insert slot design allows for quicker insert changeouts
- Pins align two halves of the holder during production
- Shoulders on the holders ensure that both halves are square and of equal height
- Repair kits are available

HOLDER STYLES

Standard

For use with GLASSMATE circular inserts, our standard holders ensure precision pickup.

Covered

Our covered holders are designed to prevent particle contamination of the ware and to reduce internal fused glass. Covered holders should be used for contamination-sensitive product ware.

Interior Spring (ILS-1)

Our ILS-1 holder design has an interior locking system (ILS) that significantly reduces foreign object debris. The holder design eliminates screws that can vibrate out or become damaged when in production, preventing premature insert loss. The internal spring holder is adjustable to accommodate fixed or floating requirements and has self-aligning shoulders for easy accurate placement.

Double Stacked

These holders are perfect for use with tall, narrow neck ware to reduce bottle swing, which helps prevent stuck ware and allows faster transfer from the mold to the dead plate.

Extended

Extended holders are designed to allow bead transfer of ware with tall finishes and are used with tamper-evident closures.

Modified

These holders allow increased visibility of the finish during precision set-up process and are ideal for ware with very tight shoulder-to-bead dimensions.

Side Mount

These holders can be used with fixed or floating inserts. Side mount holders use standard rectangular inserts.

Lightweight

The decreased shoulder of the holder allows more room between holders for machine set up. The lightweight holder features increased visibility and the reduced weight creates less wear on the machine. The decreased shoulder, combined with additional metal removed at the back of holder, produces a lightweight holder that runs longer before adjustments to the machine are necessary.

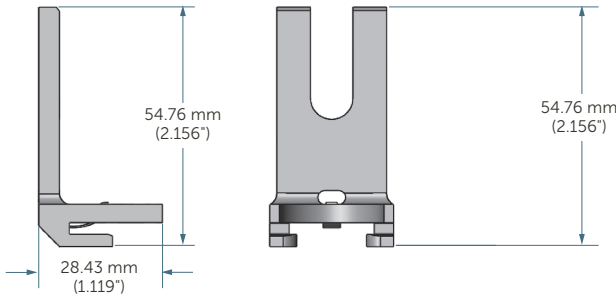
Dual Function (PR-2)

This holder can be used with either a fixed or floating insert. This holder allows the user to change from a fixed holder to a fixed/floating holder while using existing inventory of round inserts. Benefits include three-point contact with insert for better hold, reduced tooling, and increased pickup flexibility.



SIZE 18 MM AND 22 MM WITH FIXED OR FLOATING INSERTS (ILS)

DE-47074



Holder

Part number	Material	Style	Covered	Pins	Notes
DE-46301 (18 mm)*	Carbon steel	Internal spring	No	No	Fixed/floating
DE-47074 (22 mm)	Carbon steel	Internal spring	No	No	Fixed/floating

*Special order product



Inserts*

Style	Grades	A	B – Range 0 to .500"
Standard 18 mm	SR, GM, LT, XL	6.35 mm (0.25")	1.27 mm (0.05")
Standard 22 mm	SR, GM, LT, XL	6.35 mm (0.25")	1.27 mm (0.05")

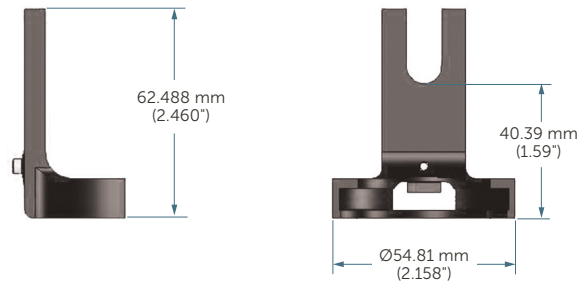
*Blank and finished take-out inserts are available. Contact Entegris for more information.

18 mm blanks with or without boss; maximum finish of 20.5 mm (0.81")
22 mm blanks with or without boss; maximum finish of 23.25 mm (0.92")

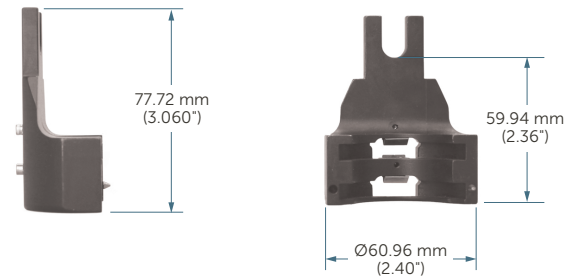
Dimensions are subject to change. Please contact Entegris for more information.

SIZE 2" × ¼" WITH FIXED INSERTS

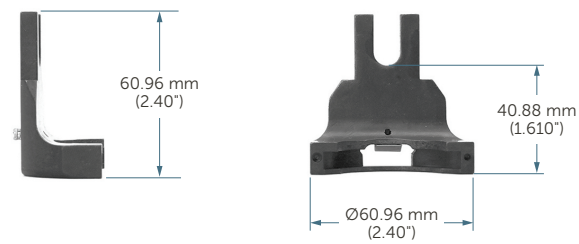
DE-12154



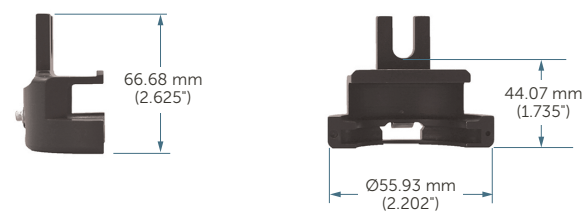
DE-12156



DE-12155, DE-12158

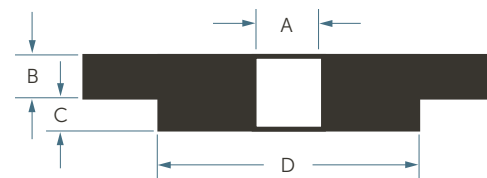
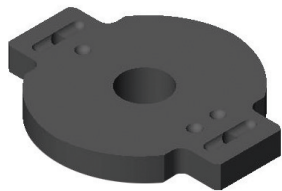


DE-12159



Holders

Part number	Material	Style	Covered	Pins
DE-12154	Carbon steel	Lightweight	No	No
DE-12155	Carbon steel	Standard	No	Yes
DE-12156	Carbon steel	Double Stacked	No	Yes
DE-12158	Carbon steel	Standard	No	No
DE-12159	Carbon steel	Standard	Yes	No



Inserts*

Style	Grade	A	B	C	D
Standard	GM	Ø12.70 mm (0.50")	6.35 mm (0.25")	1.59 mm (0.063")	Ø35.81 mm (1.41")

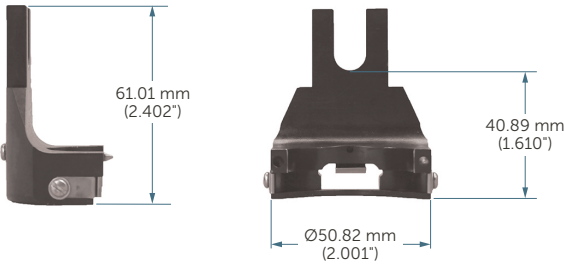
*Blank and finished take-out inserts are available. Contact Entegris for more information.

50.8 mm diameter (2") blanks with or without boss; maximum finish of Ø31 mm (1.22")

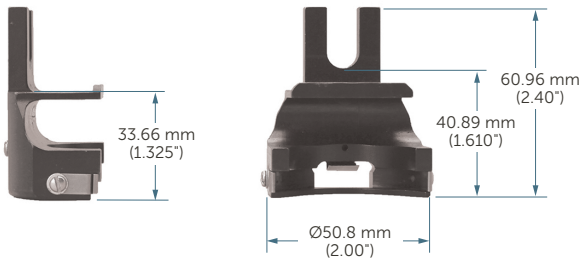
Dimensions are subject to change. Please contact Entegris for more information.

SIZE 2" x ¼" WITH FIXED OR FLOATING INSERTS

DE-22512, DE-25974

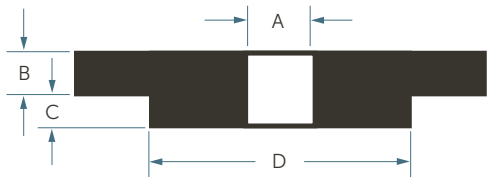
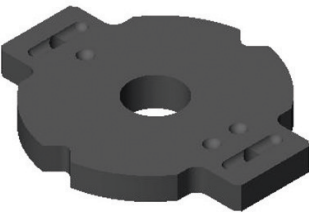


DE-25947, DE-25975



Holders

Part number	Material	Style	Covered	Pins	Notes
DE-22512 (PR-2)	Carbon steel	Dual function	No	Yes	Fixed/floating
DE-25947 (PR-2)	Carbon steel	Dual function	Yes	Yes	Fixed/floating
DE-25974 (PR-2)	Carbon steel	Dual function	No	No	Fixed/floating
DE-25975 (PR-2)	Carbon steel	Dual function	Yes	No	Fixed/floating



Inserts*

Style	Grade	A	B	C	D
Standard	GM	Ø12.70 mm (0.50")	5.59 mm (0.220")	6.35 mm (0.25")	Ø35.81 mm (1.41")

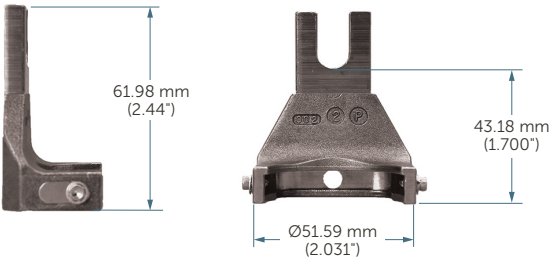
*Blank and finished take-out inserts are available. Contact Entegris for more information.

50.8 mm diameter (2") blanks with or without boss; maximum finish of Ø31 mm (1.22")

Dimensions are subject to change. Please contact Entegris for more information.

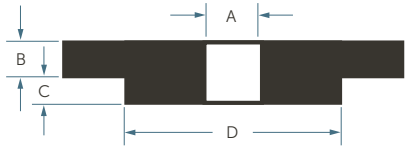
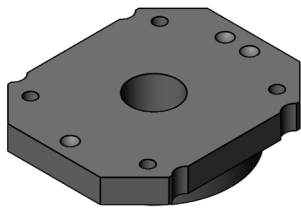
SIZE 2½" × ¼" WITH FIXED OR FLOATING INSERTS

DE-20860, DE-32191, DE-32193



Holders

Part number	Material	Style	Covered	Pins	Notes
DE-20860	Carbon steel	Side mount	No	No	Fixed/floating
DE-32191	Stainless steel	Side mount	No	No	Fixed/floating
DE-32193	Stainless steel	Side mount	Yes	No	Fixed/floating



Inserts*

Style	Grade	A	B	C	D
Standard	GM	Ø12.70 mm (0.50")	5.08 mm (0.20")	4.32 mm (0.17")	Ø41.91 mm (1.65")

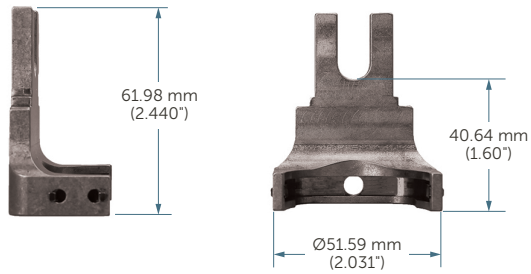
**Blank and finished take-out inserts are available. Contact Entegris for more information.*

Blanks with or without boss; maximum finish of Ø38 mm (1.496").

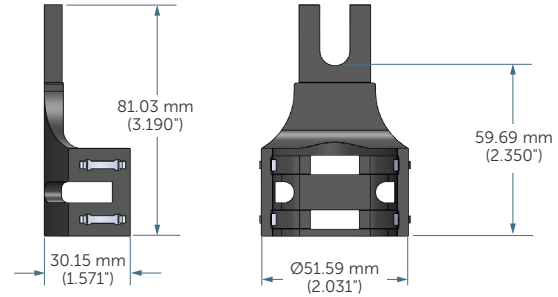
Dimensions are subject to change. Please contact Entegris for more information.

SIZE 2½" × ¼" WITH FIXED OR FLOATING INSERTS (ILS)

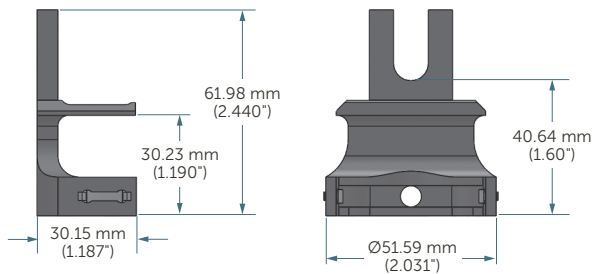
DE-36117, DE-57664



DE-47527



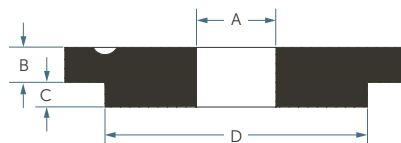
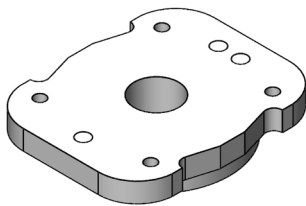
DE-47126



Holders

Part number	Material	Style	Covered	Pins	Notes
DE-36117*	Stainless steel	Internal spring	No	No	Fixed/floating
DE-57664	Carbon steel	Internal spring	No	No	Fixed/floating
DE-47126*	Stainless steel	Internal spring	Yes	No	Fixed/floating
DE-47527*	Stainless steel	Internal spring	No	No	Fixed/floating
DE-48608 extended*	Stainless steel	Internal spring	Yes	No	Fixed/floating

*Special order product



Inserts*

Style	Grade	A	B	C	D
Standard	GM	Ø12.70 mm (0.50")	6.35 mm (0.25")	3.94 mm (0.16")	Ø41.91 mm (1.65")

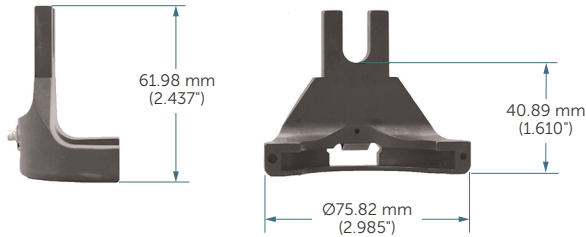
*Blank and finished take-out inserts are available. Contact Entegris for more information.

Blanks with or without boss; maximum finish of Ø38 mm (1.496")

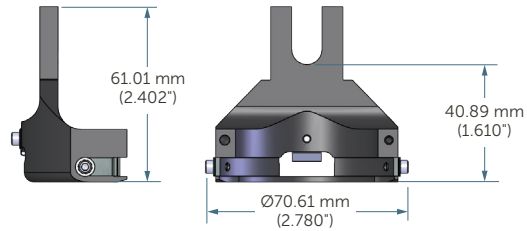
Dimensions are subject to change. Please contact Entegris for more information.

SIZE 2½" × ¼" WITH FIXED OR FLOATING INSERTS

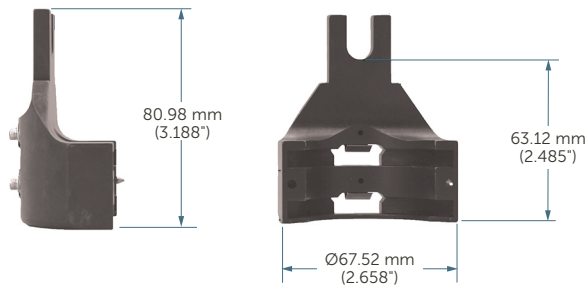
DE-12170, DE-12172



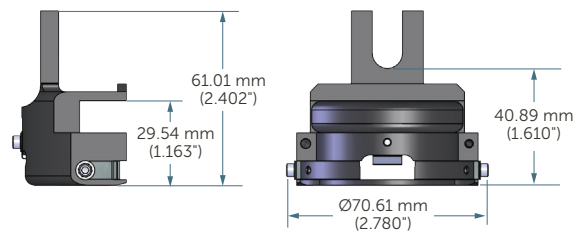
DE-48351



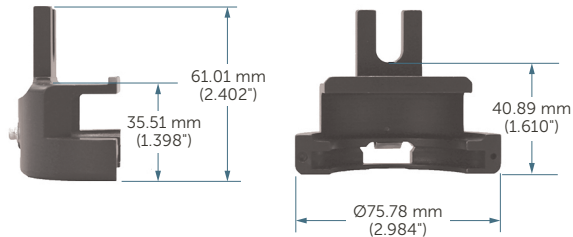
DE-12171



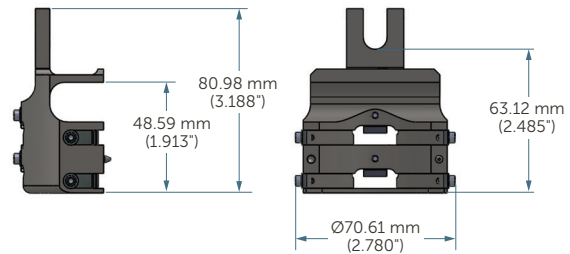
DE-53198



DE-12173



DE-53743



Holders

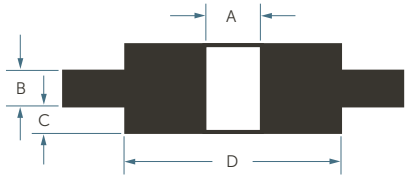
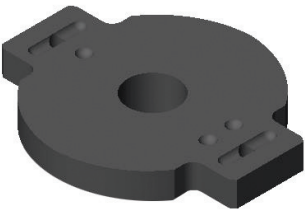
Part number	Material	Style	Covered	Pins	Notes
DE-12170	Carbon steel	Standard	No	Yes	—
DE-12172	Carbon steel	Standard	No	No	—
DE-12171	Carbon steel	Double stacked	No	Yes	—
DE-12173	Carbon steel	Standard	Yes	Yes	—
DE-48351 (PR-2)	Carbon steel	Dual function	Yes	Yes	Fixed/floating
DE-53198 (PR-2)*	Carbon steel	Dual function	Yes	Yes	Fixed/floating
DE-33705*	Carbon steel	Double stacked	Yes	Yes	—
DE-48977 (PR-2)*	Carbon steel	Dual function/double stacked	No	Yes	Fixed/floating
DE-53743 (PR-2)*	Carbon steel	Dual function/double stacked	Yes	Yes	Fixed/floating

*Special order product

Dimensions are subject to change. Please contact Entegris for more information.

SIZE 2½" × ¼" WITH FIXED OR FLOATING INSERTS (CONTINUED)

Fixed



Inserts*

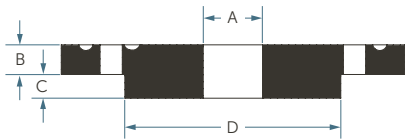
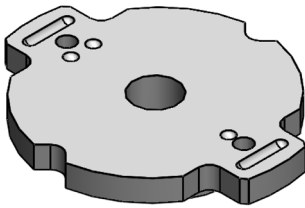
Style	Grade	A	B	C	D
Standard fixed	GM	Ø12.70 mm (0.50")	6.35 mm (0.25")	6.35 mm (0.25")	Ø46.23 mm (1.82")

*Blank and finished take-out inserts are available. Contact Entegris for more information.

63.5 mm diameter (2.5") blanks with or without boss; maximum finish of Ø41 mm (1.614")

Dimensions are subject to change. Please contact Entegris for more information.

Floating



Inserts*

Style	Grade	A	B	C	D
Standard floating	GM	Ø12.70 mm (0.50")	5.59 mm (0.22")	6.35 mm (0.25")	Ø46.23 mm (1.82")

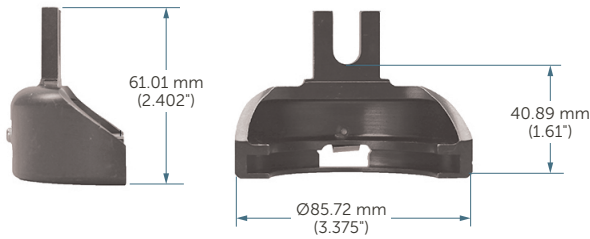
*Blank and finished take-out inserts are available. Contact Entegris for more information.

63.5 mm diameter (2.5") blanks with or without boss; maximum finish of Ø41 mm (1.614")

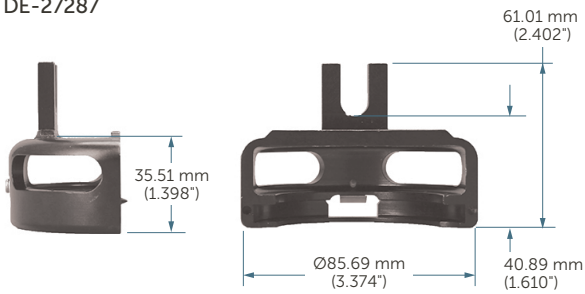
Dimensions are subject to change. Please contact Entegris for more information.

SIZE 3" x ¼" WITH FIXED INSERTS

DE-12162, 12164

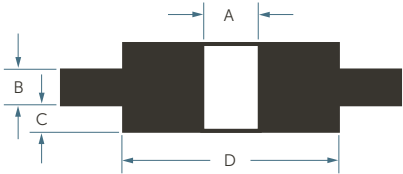
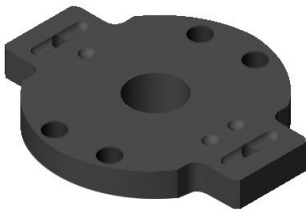


DE-27287



Holders

Part number	Material	Style	Covered	Pins
DE-12162	Carbon steel	Standard	No	Yes
DE-12164	Carbon steel	Standard	No	No
DE-27287A	Carbon steel	Standard	Yes	Yes



Inserts*

Style	Grade	A	B	C	D
Standard	GM	Ø12.70 mm (0.50")	6.35 mm (0.25")	3.18 mm (0.125")	Ø56.77 mm (2.24")

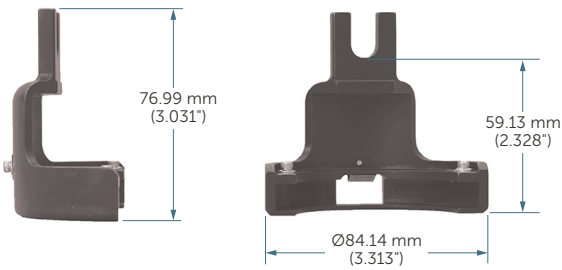
*Blank and finished take-out inserts are available. Contact Entegris for more information.

76.2 mm diameter (3") blanks with or without boss; maximum finish of Ø52 mm (2.047")

Dimensions are subject to change. Please contact Entegris for more information.

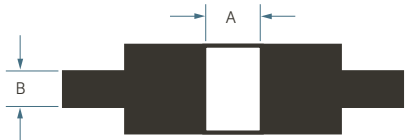
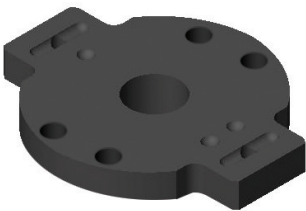
SIZE 3" × ¾" WITH FIXED INSERTS

DE-12161



Holders

Part number	Material	Style	Covered	Pins
DE-12161	Carbon steel	Extended	No	No



Inserts*

Style	Grade	A	B
Standard	GM	Ø12.70 mm (0.50")	9.52 mm (0.375")

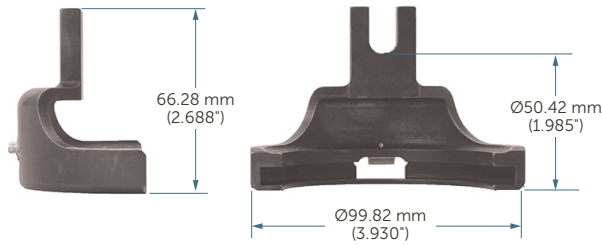
**Blank and finished take-out inserts are available. Contact Entegris for more information.*

76.2 mm diameter (3") blanks with or without boss; maximum finish of Ø52 mm (2.047")

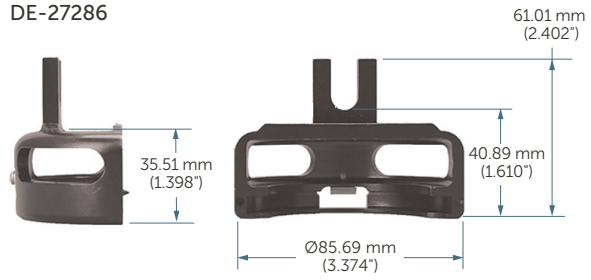
Dimensions are subject to change. Please contact Entegris for more information.

SIZE 3½" × ¼" WITH FIXED OR FLOATING INSERTS

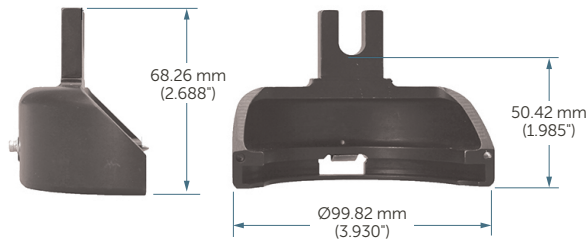
DE-12167



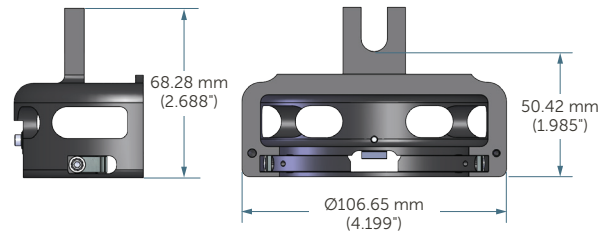
DE-27286



DE-12169

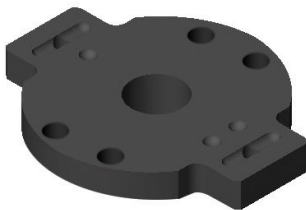


DE-50971



Holders

Part number	Material	Style	Covered	Pins	Notes
DE-12167	Carbon steel	Modified	No	No	–
DE-12169	Carbon steel	Standard	No	Yes	–
DE-27286	Carbon steel	Standard	Yes	Yes	–
DE-43645 (PR-2)	Carbon steel	Dual function	No	Yes	Fixed/floating
DE-50971 (PR-2)	Carbon steel	Dual function	Yes	Yes	Fixed/floating



Inserts*

Style	Grade	A	B
Standard fixed	GM	Ø12.70 mm (0.50")	6.35 mm (0.25")
Standard floating (PR-2)	GM	Ø12.70 mm (0.50")	6.09 mm (0.24")

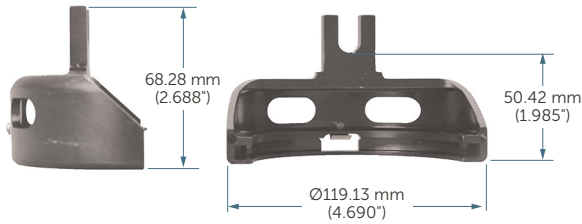
*Blank and finished take-out inserts are available. Contact Entegris for more information.

92 mm diameter (3.625") blanks with or without boss; maximum finish of Ø68 mm (2.677")

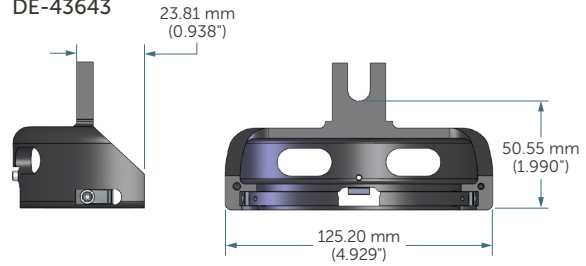
Dimensions are subject to change. Please contact Entegris for more information.

SIZE 4¾" × ¼" WITH FIXED OR FLOATING INSERTS

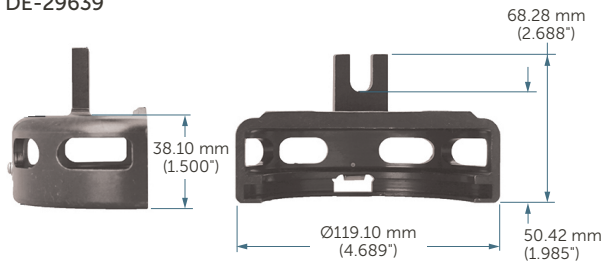
DE-12165



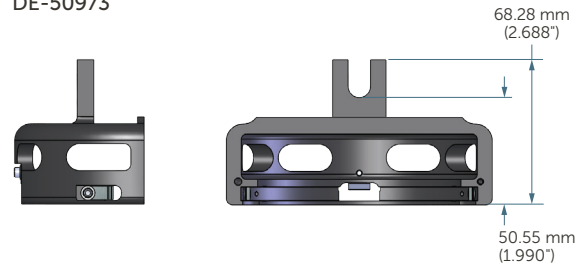
DE-43643



DE-29639

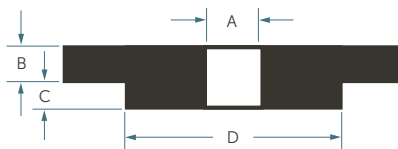
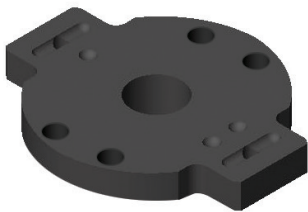


DE-50973



Holders

Part number	Material	Style	Covered	Pins	Notes
DE-12165	Carbon steel	Standard	No	Yes	—
DE-29639	Carbon steel	Standard	Yes	Yes	—
DE-43643 (PR-2)	Carbon steel	Dual function	No	Yes	Fixed/floating
DE-50973 (PR-2)	Carbon steel	Dual function	Yes	Yes	Fixed/floating



Inserts*

Style	Grade	A	B	C	D
Standard fixed	GM	Ø12.70 mm (0.50")	6.35 mm (0.25")	3.18 mm (0.125")	Ø90.17 mm (3.55")
Standard floating (PR-2)	GM	Ø12.70 mm (0.50")	6.09 mm (0.24")	3.18 mm (0.125")	Ø90.17 mm (3.55")

*Blank and finished take-out inserts are available. Contact Entegris for more information.

111.1 mm diameter (4.375") blanks with or without boss; maximum finish of Ø87 mm (3.425")

Dimensions are subject to change. Please contact Entegris for more information.


REPAIR KITS AND PARTS

Part number	Description	Quantity
-------------	-------------	----------

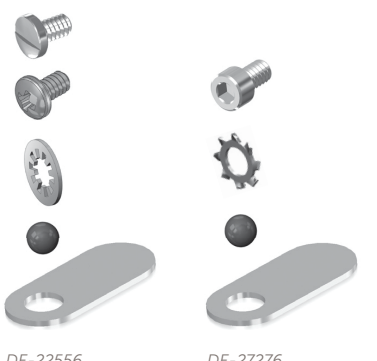
Standard, double stacked, extended, modified, lightweight holders

DE-12182	Slot head screw	100	
	Phillips head screw	100	
	Lock washer	100	
	Spring clip	100	
DE-12183	Spring clip	200	
DE-27380	Socket head screw	50	
	Serrated washer	50	
	Spring clip	50	
DE-12899	Alignment pins	100	

Dual function holders (PR-2)

DE-36380	Socket head screw	150	
	Serrated washer	150	
	Side spring clip	100	
	Back spring clip	50	

Side mount holders

DE-22556	Slot head screw	100	
	Phillips head screw	100	
	Lock washer	100	
	3/16" ball	100	
	0.020" flat spring	100	
DE-27276	Socket head screw	50	
	Serrated washer	50	
	3/16" ball	50	
	0.020" flat spring	50	

Interior spring (ILS-1)

DE-33031	Stainless steel removable cover	1	
DE-33054	Stainless steel spring	1	

Dimensions are subject to change. Please contact Entegris for more information.

FOR MORE INFORMATION

Please call your Regional Customer Service Representative or Distributor today to learn what our GLASSMATE® products can do for you. Visit poco.entegris.com/contact-us for the location nearest you.

TERMS AND CONDITIONS OF SALE

All purchases are subject to Poco Graphite's Terms and Conditions of Sale. To view and print this information, visit poco.entegris.com/terms-and-conditions.



300 Old Greenwood Road
Decatur, Texas 76234
USA

Customer Service
Tel +1 940 627 2121
Fax +1 940 393 8366

Entegris® and the Entegris Rings Design® are trademarks of Entegris, Inc., and POCO® and other product names are trademarks of Poco Graphite, Inc., as listed on entegris.com/trademarks. All third-party product names, logos, and company names are trademarks or registered trademarks of their respective owners. Use of them does not imply any affiliation, sponsorship, or endorsement by the trademark owner.

©2010-2025 Entegris, Inc. | All rights reserved. | Printed in the USA | 6206-10228ENT-0725