

Common Plane Pickup

Reducing setup time

SITUATION

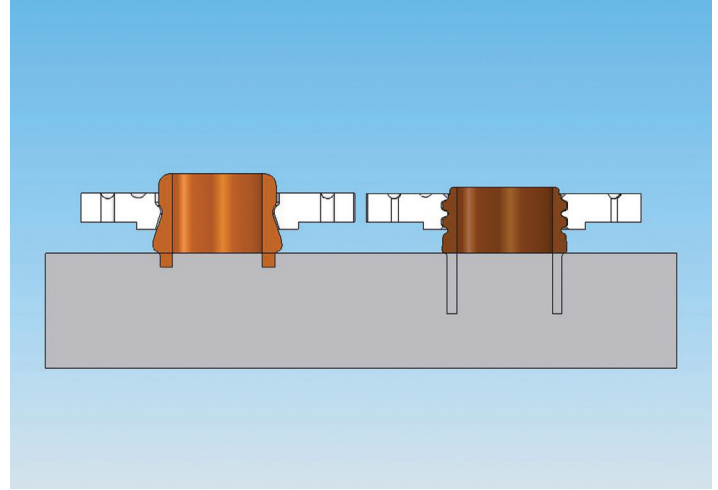
A glass plant ran many similarly sized containers, but each type of container had a different finish. Production time was lost each time take-out holders had to be adjusted to accommodate a different container. Since the distance from the mold to the pickup point on the finish was similar on many jobs, the manager requested that we evaluate the concept of common plane inserts to eliminate setup between runs.

PROBLEM

The mold shop manager was losing valuable production time due to adjustments between similar jobs. With an average of one job change per week, he needed a way to change inserts between jobs without realigning take-out holders.

SOLUTION

Our engineers designed a 26-500 bead finish insert and a 28-1650 thread finish insert that had a common plane. By taking the time to plan ahead, the finishes could be adjusted within the inserts to make it possible to run the jobs successfully without the normal holder and insert setup. A simple insert change, within the holder currently installed, reduced production downtime. This customer, using a conservative 30 minutes savings per job change, estimated that using sets of common plane inserts would save \$60,000.00 per year.



INSERTS FOR COMMON PLANE PICKUP

Inserts have been successfully run with bead-to-bead pickup changes or bead-to-thread pickup changes. Common plane design is based on primary finish or first run container.

Information Required

- Mold neck radius and diameter
- Shim thickness desired
- Neck ring drawings of finishes to common plane or make interchangeable
- Type of pickup point of each finish (crown, underthread, thread, bead)

INSERTS FOR COMMON PLANE PICKUP

For the container glass industry, we have both applications and design engineers readily available to help our partners solve performance issues or make improvements to their production efficiencies.

Our quality system is certified to ISO 9001:2015 and AS9100:2009D.

FOR MORE INFORMATION

Please call your Regional Customer Service Representative or Distributor today to learn what our GLASSMATE® products can do for you. Visit poco.entegris.com/contact-us for the location nearest you.

TERMS AND CONDITIONS OF SALE

All purchases are subject to Poco Graphite's Terms and Conditions of Sale. To view and print this information, visit poco.entegris.com/terms-and-conditions.



300 Old Greenwood Road
Decatur, Texas 76234
USA

Customer Service

Tel +1 940 627 2121
Fax +1 940 393 8366

Entegris® and the Entegris Rings Design® are trademarks of Entegris, Inc., and POCO® and other product names are trademarks of Poco Graphite, Inc., as listed on entegris.com/trademarks. All third-party product names, logos, and company names are trademarks or registered trademarks of their respective owners. Use of them does not imply any affiliation, sponsorship, or endorsement by the trademark owner.

©2010-2020 Entegris, Inc. | All rights reserved. | Printed in the USA | 6206-10202TAN-0320